

EXPRESSIVE LINES

Take a look at this selection of lines.

Can you think of any adjectives we could apply to them?

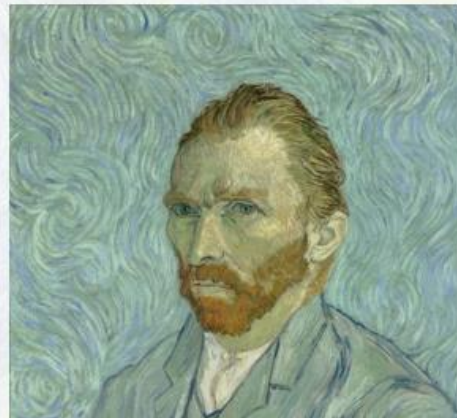
Can you “see” any of these words?

Nervous	Graceful
Angry	Confident
Happy	Hesitant
Excited	Joyful
Calm	Free
Dancing	Quiet



Vincent van Gogh was a Dutch Post-Impressionist painter. His artwork and recognised style has been extremely influential throughout history.

He has created thousands of paintings with his most famous works being created in his last few years of life.



Van Gogh's paintings were mainly landscapes and portraits. Known for their dramatic, expressive, bold colours and brushstrokes. His distinctive style was influenced by his years of poverty, mental illness and travel throughout Europe.



Vincent van Gogh
'Olive Trees in Yellow Sky' - 1889



Vincent van Gogh
'Self-Portrait with Grey Felt Hat' - Winter 1887-88

Where has Vincent van Gogh used expressive lines within his work?

What mood or emotion do the paintings convey?



Vincent van Gogh
'Olive Trees with the Alpilles
in the Background' - 1889



Vincent van Gogh
'Starry Night' - 1889

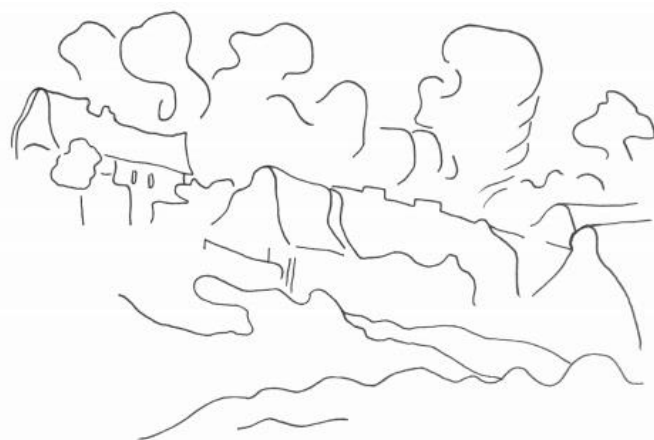
Warm-up

Write down 5 different emotions. Practise copying some of Van Gogh's lines to represent those different emotions. Try swirls, curves, zig-zags, dots, wavy lines.

Activity

You are going to draw a very simple outline of a landscape and use different expressive lines to fill each object the way Van Gogh has in his paintings.

Example:



Vincent van Gogh
'Landscape with Houses' - 1890